



Concrete Cures

Cures & Seals

Sealers

Since
1957

American-Made Products

A FAMILY
OWNED
COMPANY

Our Knowledge is **Concrete**SM

For over 60 years, ChemMasters has developed and manufactured specialty products to improve, repair and protect concrete and masonry. We operate a state-of-the-art research and development facility dedicated to advancing the science of concrete improvement. We have developed many unique products, putting us years ahead of the industry. When selecting our products, you can be assured of the support, follow-through and knowledge of our concrete experts.



Solvent-Based Cures & Seals

ChemMasters' solvent-based products are unmatched in their appearance, depth of gloss, depth of penetration and adhesion. The ability to recoat over existing sealers makes them the primary choice for all types of concrete. Because of their cosmetic appeal, solvent-based cures & sealers are particularly well suited for exposed aggregate, stamped, and decorative concrete.

ChemMasters is the acknowledged industry leader when it comes to low-VOC solvent-based products for use in states that require them. Our "A" formulations of these products are ideal alternatives for these locations.

Solvent-Based Penetrating Cure & Seal for Broom Finished Concrete

One Step Application with Proven Longest-Lasting Protection



Silencure™ / Silencure A

Penetrating Silane Cure & Seal

Unique, patented formula makes this the industry's only "once and done" penetrating cure & seal! Save time and money while getting the highest quality, longest lasting protection from de-icing chemicals and freeze/thaw damage. Cures with a pure acrylic and seals with a penetrating silane, all in one step!

Low Gloss

40% Solids

Patented

Formulation

Superior Salt Protection

Use Silencure A in states requiring < 350 g/L VOC

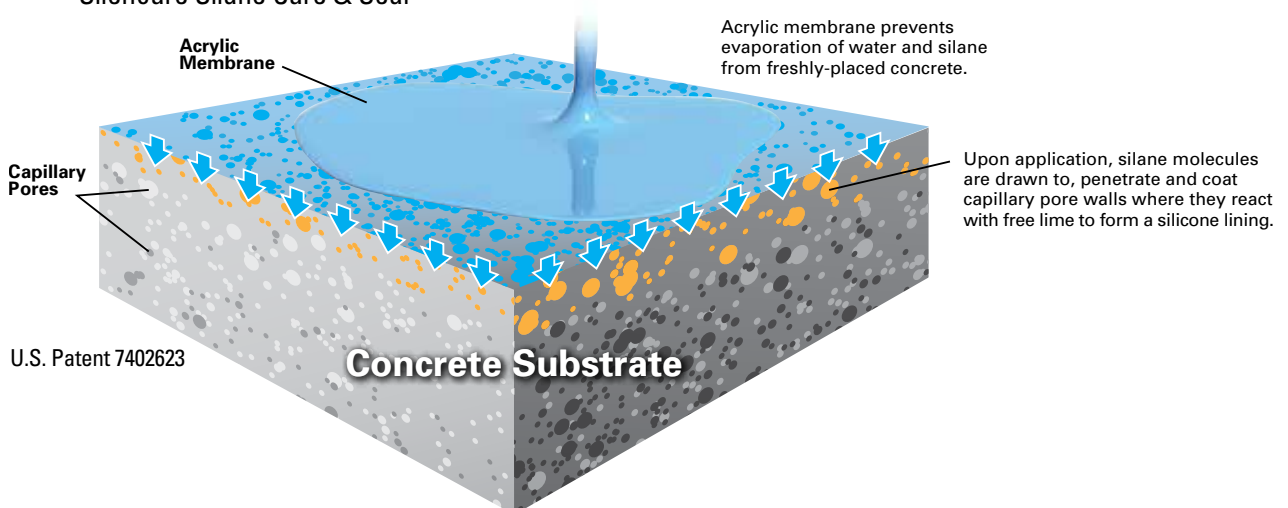
Not for Hard Steel Troweled Surfaces

For Use Only on Freshly Placed Concrete

SPECIFICATIONS: ASTM C309, Type 1 or 1D, Class A & B
ASTM C1315, Type I, Class A; NCHRP 244, Series II & IV

How it Works:

Silencure Silane Cure & Seal



Solvent-Based Cure & Seal for Broom Finished Concrete

The "Workhorse" for Outdoors or Under Tile or Carpet



Spray-Cure & Seal 25 / Spray-Cure & Seal 25-A

Styrenated Acrylic Cure & Seal

Styrenated acrylic formula with added UV inhibitors makes this your first choice to economically cure, seal and dustproof finished concrete driveways, sidewalks, and patios. Compatible with most adhesives used for resilient floor coverings. For a guaranteed non-yellowing finish, see Polyseal™ product.

Medium Gloss **Broom Finished Concrete**
25% Solids **Use Spray-Cure & Seal 25-A in states requiring**
USDA when Cured **< 350 g/L VOC**

SPECIFICATIONS: ASTM C309, Type 1 or 1D, Class A & B
ASTM C1315, Type I, Class A (Non-Yellowing)

Solvent-Based Cures & Seals for Decorative Concrete

Avoid Bubbles Even on Hot, Windy Days



Polyseal™ EZ / Polyseal EZ Honey Brown

Bubble Resistant Low-VOC Cure & Seal

Pure acrylic, non-yellowing bubble resistant formula provides high quality curing, sealing and dustproofing for broom finished concrete with superior performance on decorative concrete. Darkens concrete and enhances integral colors with outstanding gloss characteristics in a bubble resistant, low-VOC formula.

High Gloss **Broom Finished Concrete**
USDA when Cured **Decorative Concrete**
 Honey brown pre-tinted version available

SPECIFICATIONS: ASTM C309, Type 1 or 1D, Class A & B

Guaranteed Not to Yellow



Polyseal™ / Polyseal A / Polyseal A Satin Finish

Pure Acrylic Cure & Seal

Pure acrylic formula provides high quality curing, sealing and dustproofing for broom finished concrete driveways, sidewalks and patios. Also provides excellent cosmetics for decorative applications such as exposed aggregate and stamped concrete.

High Gloss **Broom Finished Concrete**
25% Solids **Decorative Concrete**
USDA when Cured **Use Polyseal A in states requiring < 350 g/L VOC**
 Available in satin finish

SPECIFICATIONS: ASTM C309, Type 1 or 1D, Class A & B
ASTM C1315, Type I, Class A



Traditional
Solvent-Based
Sealer

Traditional
Water-Based
Sealer

Polyseal-A
Satin Finish
Sealer

*Silencure is a
Patented, Hybridized
Penetrating
Cure and Seal.*

Solvent-Based Cures & Seals

Solvent-Based Cures & Seals for Decorative Concrete

Great Gloss with Deep-Down Protection



Polyseal™ EZ Shield

Decorative Acrylic Cure & Seal with Silane Shield

Hybridized, non-yellowing, high gloss acrylic cure & seal with long lasting penetrating silane sealer formulated to have unique bubble resistant qualities in high temperature applications. Features enhanced cosmetic characteristics with superior freeze/thaw protection for use on decorative concrete.

High Gloss	Decorative Concrete
USDA when Cured	Use in states requiring <350 g/L VOC
SPECIFICATIONS: ASTM C309, Type 1 or 1D, Class A & B	

Proven to Have the Longest Lasting High Gloss



Crystal Clear / Crystal Clear A

Siliconized Acrylic Cure & Seal

Specially formulated to cure, seal and dustproof high end decorative exposed aggregate and stamped concrete. Ideal for those applications demanding the deepest available gloss and highest UV stability on the market today! Non-yellowing.

Super High Gloss	Decorative Stamped Concrete
27% Solids	Exposed Aggregate
USDA when Cured	Use Crystal Clear A in states requiring < 350 g/L VOC

SPECIFICATIONS: ASTM C309, Type 1 or 1D, Class A & B
ASTM C1315, Type I, Class A

High Solids Formulation



Polyseal™ Plus / Polyseal Plus A

30% Solids Acrylic Cure & Seal

High solids, non-yellowing acrylic formula for curing, sealing and dustproofing broom finished concrete driveways, sidewalks and patios. An outstanding choice for use on decorative concrete such as exposed aggregate and stamped concrete.

High Gloss	Broom Finished Concrete
30% Solids	Decorative Concrete
USDA when Cured	Use Polyseal Plus A in states requiring < 350 g/L VOC

SPECIFICATIONS: ASTM C309, Type 1 or 1D, Class A & B
ASTM C1315, Type I, Class A

Solvent-Based Sealers

A Superior Sealer for Decorative Concrete



Traz™ 25 / Traz 25-A

Methyl-Methacrylate Sealer

Developed for use as a sealer on decorative exposed aggregate, stamped concrete and terrazzo stone. Superior resistance to UV light, freeze/thaw, acid rain, staining and water absorption with moderate chemical resistance. Non-yellowing formula.

Super High Gloss	Decorative Stamped Concrete
25% Solids	Exposed Aggregate
USDA when Cured	Use Traz 25-A in states requiring
	< 400 g/L VOC

Non-Bubbling Low-VOC Sealer



Stamped & Decorative Concrete Sealer 400-A

A Low-VOC Problem Solver

Specially formulated as a non-bubbling, slow evaporating sealer for stamped and decorative concrete in low-VOC states. Provides 200-300% longer working time during application, is less prone to blushing or whitening from over application, with no residual bubbles in the coating. VOC compliant in OTC and LADCO states, and throughout Canada. Non-yellowing formula.

High Gloss	Decorative Stamped Concrete
Low-VOC	Exposed Aggregate

A Super High Gloss Sealer for Decorative Concrete



MMA Wet Look Sealer / MMA Wet Look Sealer A

Methyl Methacrylate Decorative Sealer

Super high gloss sealer for sealing and re-sealing all types of decorative concrete. Superior resistance to damage caused by UV exposure, freeze/thaw, acid rain, staining, water absorption with moderate chemical resistance.

Super High Gloss	Stamped, Decorative & Exposed Aggregate
25% Solids	Use MMA Wet Look Sealer A in
USDA when Cured	states requiring <400 g/L VOC

*Add Translucent
Tint to Your
Sealer for Improved
Appearance of
Decorative Concrete!*

Penetrating Sealers, Water Repellents, Hardeners & Densifiers

Solvent-Based Penetrating Sealers and Water Repellents

Silane Resin Provides Outstanding Waterproofing



Aquanil™ Plus 40 / Aquanil Plus 40-A / Aquanil Plus 100

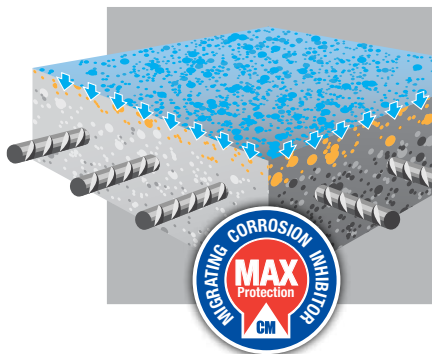
Penetrating Silane Sealer & Waterproofer

Chemically reactive alkyltrialkoxysilane penetrating sealer that repels moisture and water from horizontal or vertical concrete and masonry, protecting from freeze/thaw cycles, salt and deicing chemicals. Use on residential, commercial, municipal and industrial structures including parking lots, garages, driveways, patios, bridge decks, median barriers, piers, etc.

Sealer & Waterproofer **100% Solids Formulation Available** **Superior Salt Protection**
No Gloss **Use Aquanil Plus 40-A or Plus 100 in states requiring < 250 g/L VOC**

SPECIFICATIONS: NCHRP 244, ASTM C672, ASTM C642, ASTM E96, ASTM G53, ASTM D1653

Superior Protection for Structural Steel and Rebar



Aquanil™ Plus 40 CI / Aquanil Plus 40-A CI / Aquanil Plus 100 CI

Penetrating Silane Sealer with Added Migrating Corrosion Inhibitor (CI)

Penetrating, chemically reactive alkyltrialkoxysilane solvent based silane sealer with added Migrating Corrosion Inhibitor (CI) that repels moisture and water from concrete and masonry providing superior protection to structural steel and rebar. Protects against damage caused by freeze/thaw cycles and deicing chemicals. Use on bridges and parking decks. Available in 40% and 100% solids, and low-VOC formulations.

Sealer & Waterproofer **Added CI Protects Rebar & Structural Steel**
No Gloss **Use Aquanil Plus 40-A CI or Aquanil Plus 100 CI**
Superior Salt Protection **in states requiring <250 g/L VOC**

SPECIFICATIONS: NCHRP 244 Series II & Series IV, ASTM C672, ASTM C642, ASTM E96, ASTM G53, ASTM D1653

Economical Linseed Oil Sealer for Commercial Concrete



Anti-Spall 55

A blend of boiled linseed oil and mineral spirits for penetrating protection of exterior concrete on pavement, roadways, bridge decks, abutments and other municipal, commercial or industrial pavements. Not for use on residential concrete. May darken concrete.

No Gloss Penetrating Sealer **55% Solids**
Does Not Cure Concrete **Low-VOC Formula**

SPECIFICATIONS: ASTM D260, ASTM D235

Water-Based Penetrating Sealers & Water Repellents

Low-VOC Water-Based Penetrating Waterproofer



Spall Guard™ WB 10%

Penetrating Siloxane Sealer & Waterproofer

Penetrating, chemically reactive oligomeric alkylalkoxy siloxane moisture and water repellent. Contains a special beading agent to enhance water resistance and a catalyst to ensure the optimum chemical reaction.

No Gloss **Protects Against Freeze/Thaw & Salt** **Low-VOC Formula**
10% Solids **Available in a 7% Version or 50% Solids Version**

SPECIFICATIONS: NCHRP 244, Series II & Series IV; ASTM C672

Liquid Floor Hardeners & Densifiers

Economical Floor Hardener and Dustproofers



Chemisil™

Liquid Floor Hardener & Dustproofers

A chemically reactive sodium silicate liquid that hardens and dustproofs floors all in one step. Compatible with most resilient floor coverings. Halts the progression of deterioration caused by carbonation. Also available in a lithium silicate version.

No Gloss	Strengthens, Hardens and Dustproofs Floors
Low-VOC Formula	USDA when Cured
	Resists Black Tire Marks

High Performance Floor Hardeners



Chemisil™ Plus

Liquid Floor Hardener, Densifier & Dustproofers

A chemically reactive potassium silicate with silicate that changes the chemical composition of concrete surfaces by filling the pores and capillaries with a gel that densifies, hardens and dustproofs the surface. Formulated for use on warehouse, distribution center, convention center, school, hospital, retail and grocery floors.

Chemisil™ Plus Li

Lithium Silicate Floor Hardener, Densifier & Dustproofers

Lithium silicates are easier to apply and less prone to white salt deposits.

Slight Sheen	Resists Black Tire Marks
Low-VOC Formula	Strengthens, Hardens & Densifies Floors
	USDA when Cured

SPECIFICATIONS: ASTM C672, ASTM E96, ASTM C642, Fed. Spec. SSW 110C

Protect and Enhance Polished Concrete Floors



ChemGuard™

Hybridized Penetrating/Film Forming Polished Concrete Guard

The first guard formulated with customized polymers, hybridized silicates, and organically-reacted colloidal silica, all of which have been synthesized for the express purpose of working in concert with one another to protect and enhance polished concrete floors. The result is a guard with superior stain resistance, hardness, durability and repairability. ChemGuard prolongs the life of decorative concrete floors, improves their appearance and lowers maintenance costs.

Add Oil Resistance to Floors



Chemisil™ Plus OR

Oil Resistant Penetrating Floor Treatment

A chemically reactive treatment that is applied over Chemisil, Chemisil Plus, or Chemisil Plus Li to seal concrete from absorption of oil, grease and a variety of acids, alkalies and other fluids. Used in combination with other Chemisil products, Chemisil Plus OR creates a completely water-based, exceptionally low odor, and long-term system to protect a wide variety of service, manufacturing and light industrial floors.

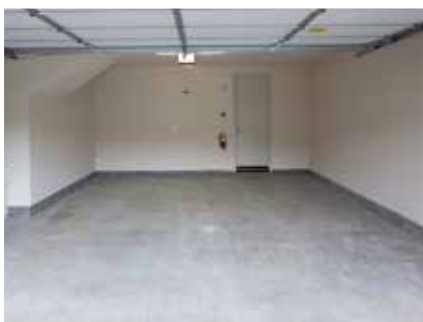
Slight Sheen	Strengthens, Hardens & Densifies Floors
Low-VOC Formula	Resists Black Tire Marks
	USDA when Cured

*EZ Strip™ Cure
Will Cure Interior
Concrete, but it is
Easily Removed for
Penetrating Floor
Treatments!*

Water-Based Cure & Seals

ChemMasters manufactures a complete line of water-based cures as well as cure and seal products. Water-borne emulsion formulations make them ideal for use in low-VOC states, indoors or wherever solvent-based products are not desired.

Economical Cure & Seal



Safe-Cure® & Seal 309

Ideal for Indoor and Outdoor Use

A water-based, styrenated acrylate emulsion for curing and sealing concrete. Odor free for use in basements, garages and other indoor and outdoor applications. Compatible with most resilient flooring.

Cures New Concrete

Seals New & Old Concrete
< 100 g/L VOC

Appearance: Low Gloss

Solids: 15%

USDA when Cured

SPECIFICATIONS: ASTM C309, Type 1 and 1D, Class A & B

Guaranteed Not to Yellow



Polyseal™ WB

Pure Acrylic Cure & Seal

A high solids, non-yellowing, UV stable pure acrylic concrete curing and sealing compound. Odor and solvent free for use in basements, garages, and other indoor applications. Use outdoors where a VOC compliant water-based sealer is needed.

Cures New Concrete

Seals New & Old Concrete
< 100 g/L VOC

Appearance: Medium Gloss

Solids: 25%

USDA when Cured

SPECIFICATIONS: ASTM C309, Type 1, 1D or 2, Class A & B
ASTM C1315, Type I & II, Class A

Water-Based Penetrating Cure & Seal

One Step Application; Proven Long Lasting Protection



Silencure™ SRT

Penetrating Blend of Silane Modified Siloxanes

Water-based version of our patented formulation. The same long lasting protection from de-icing chemicals and freeze/thaw damage in a version that can be used on more surfaces, including hard steel troweled concrete. Use on freshly placed or existing concrete. Cures with an acrylic resin, and seals with a penetrating silane, all in one step.

Low Gloss

28% Solids

Low-VOC Formula

Superior Salt Protection

Patented Formulation

For Use Only on Freshly Placed Concrete

SPECIFICATIONS: ASTM C309, Type 1 or 1D, Class A & B
ASTM C1315, Type I, Class A; NCHRP 244, Series II & Series IV

Concrete Curing Compounds

Seals Less than Ideally Cleaned Concrete



SafeSeal™

Low Odor, Hydrocarbon-Free Formula

A water-based, low odor cure and seal that contains no hydrocarbon solvents. Bonds well to concrete that cannot be cleaned to optimal conditions. Works when other sealers fail. Provides good chemical, oil and stain resistance while it safely cures, seals and dustproofs concrete and masonry surfaces. Minimizes the potential for “blushing” from over-application.

Cures New Concrete

Appearance: Low Gloss

Low-VOC Formula

Seals New & Old Concrete

Solids: 16%

SPECIFICATIONS: ASTM C309, Type 1, Class A & B

Curing Compounds for Indoor Applications



EZ Strip Cure^{DR} / EZ Strip Cure™

Removable & Dissipating Resin Cures

Water-based, low odor, low-VOC curing compounds for fresh concrete. Available in both easily removable (EZ Strip Cure) and dissipating resin (EZ Strip Cure^{DR}) versions for floors scheduled to receive subsequent treatments, penetrating sealers, floor coatings and coverings, or water-proofing compounds.

Cures New Concrete

Appearance: No Gloss

Low-VOC Formula

Sealer: No

Solids: 20%

SPECIFICATION: ASTM C309, Type 1, Class A & B

Epoxy Curing & Sealing Compound



Safe-Cure® & Seal EPX

Use Alone or as a Two-Part System

A two-component, water-based epoxy curing and sealing compound. Use alone to provide excellent wear and chemical resistance, or as a primer for epoxy or urethane topcoats, such as Duraguard 310CRU. Safe-Cure & Seal EPX is available in clear or pigmented formulations.

Cures New Concrete

Appearance: Medium Gloss

Sealer: Yes

Solids: 31 % Clear, 40-45% Pigmented

Low-VOC Formula

SPECIFICATIONS: ASTM C309, Type 1 or 2 (pigmented), Class A & B, ASTM C1315, Type I or II (pigmented); NCHRP 244, Series II & Series IV

Sand Joint Stabilizer



Sure-Lock™ WB

For Use With Pavers or Stone

A water-based, non-yellowing stabilizer for sanded joints between pavers or stones. This state of the art proprietary formulation is designed to penetrate into and bind the joint sand and ensure the integrity of paver systems. Provides long-lasting erosion protection from heavy rains and winds while protecting pavers and stone from salt spray, acid rain, dirt, food and beverage spills, or fertilizer stains. Enhances the natural color of pavers or stone.

Low-VOC Formula

Appearance: Medium Gloss

Sealer: Yes

Solids: 25%

*Water-Based
Cures and Sealers
are Ideal for
Indoor Use*

Evaporation Retarder, Epoxy & Urethane Alternative and Special Products

Assurance the Job Won't Get Away from You



Spray Film™

Evaporation Retarder

An evaporation retardant that forms a monomolecular film on the surface of freshly placed concrete to combat rapid drying from high temperatures, low humidity, high winds, direct sunlight or heated interior conditions. A "must-have" for every concrete finisher.

Green Color

Easy to Spray

Highly Concentrated Formula

Economical to Use

SPECIFICATIONS: ACI 302, ACI 308, ACI 305, ACI 345

User-Friendly Chemical Resistance



DuraShield SRT™

Epoxy and Urethane Alternative

Hardness and abrasion resistance similar to urethane, with the chemical resistance of an epoxy, but in a low-odor, ultra-low VOC, easy to apply formula. Safe enough to use indoors on concrete countertops, strong enough to be used on interior floors exposed to caustic chemicals or food-stuffs, and glossy enough to be used on the finest interior decorative concrete.

Does Not Cure Concrete

Low-VOC Formula

Solids: 25%

Appearance: Super High Gloss

Seals Cured Concrete-

Use Polyseal WB as a Primer on Fresh Concrete

Restores Gloss Without Affecting Breathability



Gloss Restorer™ XL

Prevents Blushing

For use over existing acrylic sealers that have become dull and weathered to restore the deep gloss, shine and luster they had when originally applied. Prevents acrylic buildup from multiple coats of traditional sealers, maintains breathability and avoids "whitening" from over application. Keeps decorative concrete looking its best and restores the "wet look."

Does Not Cure Concrete

Revitalizes Existing Sealers

Low-VOC Formula

Appearance: Super High Gloss

Proprietary Formula

For Use on Cured Concrete Only



Paver Enhancer

Enhances & Enriches Architectural Pavers

Paver Enhancer™ is a penetrating, water-based treatment that deepens and enhances the color of porous architectural dry cast pavers. This product was specifically designed for use on pavers for maximum cosmetic enhancement with uncompromised breathability. Paver Enhancer penetrates the surface of pavers, minimizing the formation of efflorescence and creating a matte finish that resists staining.

Low-VOC Formula

Does Not Cure Concrete

Use on Dry Cast Pavers

Appearance: Very Low Gloss

User-Friendly Slip Resistant Additive



Slip Stop™

For Floor Coatings & Sealers

Slip Stop is a micronized polymer that can be added to acrylic sealers, epoxies, urethanes and other floor coatings to provide slip resistance, fine texturing and gloss reduction. Stirs in easily; does not change viscosity of the coating or sealer. Stays in suspension, even in thin material.

Improves the Slip Resistance of Any Floor

Works with a Wide Variety of Products

Spherical Shape Provides a Smoother Feel Under Foot

Easier to Clean than Other Slip Resistant Treatments

Surface Retarder to Create Exposed Aggregate



Exposee™

Surface Retarder

A concrete surface retarder suitable for use on horizontal surfaces to produce decorative exposed aggregate finishes or profiled finishes for subsequent toppings, overlays or membranes. Apply to fresh, green concrete to retard the surface mortar set and eliminate the need for costly sandblasting or acid washing. Create decorative and functional driveways, sidewalks, patios or rough surfaces to improve mechanical bonds for keyway joints, waterproofing membranes and cementitious coatings.

Create Exposed Aggregate
Low-VOC Formula

For Horizontal Surfaces

Works To A Uniform Depth Up To .25 Inch (.64 cm)

Adds Color to Create Decorative Finishes



Translucent Tint

Sealer Tint System

Add Translucent Tint to any ChemMasters solvent-based cure and seal or sealer to create a custom decorative appearance on exposed aggregate or stamped concrete. Use a single or double dose to deepen colors to your personal taste. Highlights the natural color of concrete and stone. Hides variations in substrate color to give a more uniform appearance.

Enhances the Appearance of Decorative Concrete

Use With Any ChemMasters Solvent-Based Cure & Seal or Sealer

Available in 5 Standard Colors: Brown, Buff, Gray, Rawhide, Terra Cotta

Hides Repairs



Polyseal™ Tint & Polyseal WB Tint

Opaque, to Create Uniform Appearance

Add to cure & seals to create an opaque, decorative film. They do a great job of masking repairs to concrete surfaces. Use Polyseal™ Tint in solvent-based sealers and Polyseal WB Tint in water-based versions. Available in:

Light Gray

Milk Chocolate

Dark Chocolate

Brick Red

Terra Cotta

Buff

Black

Battleship Gray

French Gray

Tan

Sandstone

Winter White

*Pigmented
Sealers Can
Enhance
Appearance or
Cover-Up Repairs
and Mistakes*

Water-Based Highway & Airport Cures

ChemMasters is a major manufacturer of both white pigmented and clear, wax and resin emulsion curing compounds for curing exterior concrete including highways, curbing, sidewalks, driveways, parking lots and median barriers. Formulated for and approved by most state transportation departments.

WHITE PIGMENTED WAX CURES

Safe-Cure® 800

White Pigmented Wax Highway Cure

Cures New Concrete Appearance: White
Does Not Seal Concrete

SPECIFICATIONS: ASTM C309, Type 2, Class A

Safe-Cure® 1000

White Pigmented Wax Highway Cure

Cures New Concrete Appearance: White
Does Not Seal Concrete

SPECIFICATIONS: ASTM C309, Type 2, Class A

Safe-Cure® 1000VA

Specially formulated to meet standards established by the Virginia Department of Transportation.

Safe-Cure® 1200

High Solids White Pigmented Wax Highway Cure

Cures New Concrete Appearance: White
Does Not Seal Concrete

SPECIFICATIONS: ODOT #800, ASTM C309, Type 2, Class A

Safe-Cure® 1200 06-012

Specially formulated to meet standards established by the Illinois Department of Transportation

CLEAR WAX CURES

Safe-Cure® 1000 Clear

Pigment-free version

Safe-Cure® 1200 Clear

Pigment-free version

WHITE PIGMENTED RESIN CURES

Safe-Cure® 2000

White Pigmented Resinous Highway Cure

Cures New Concrete Appearance: White
Does Not Seal Concrete Low-VOC Formula

SPECIFICATIONS: ASTM C309, Type 2, Class A & B

Safe-Cure® 2000AP

White Pigmented Resinous Cure For Airport Pavement

SPECIFICATIONS: ASTM C309, Type 2, Class A & B

Safe-Cure® 3500

Specially formulated to meet the standards established by the Ontario Ministry of Transportation

Cures New Concrete Appearance: White
Does Not Seal Concrete Low-VOC Formula

SPECIFICATIONS: ASTM C309, Type 2, Class A & B

Safe-Cure® 4000

White Pigmented Poly-Alpha-Methylstyrene (PAMS) Highway Cure

Cures New Concrete Appearance: White
Does Not Seal Concrete Low-VOC Formula

SPECIFICATIONS: ASTM C309, Type 2, Class A & B



Low Viscosity Crack Sealer/Healers



Duraguard 401 & 401-30E

High Molecular Weight Methacrylate Penetrating Sealer

A three-component, very low viscosity, solvent free, high molecular weight methacrylate (HMWM) penetrating sealer and crack healer. It may be used as a gravity fed resin or a specialized crack injection product. Available in both rigid (Duraguard 401) and flexibilized (Duraguard 401-30E) versions.

Duraguard HM Sealer

Low Viscosity, High Modulus Epoxy Sealer and Crack Filler

Duraguard HM Sealer is a 100% solids, very low viscosity, high modulus epoxy sealer and crack filler. It is moisture insensitive and can be gravity fed on horizontal surfaces or pressure injected into vertical and overhead concrete and masonry for structural repairs.

One-Step Protection



Silencure™DOT

White Pigmented Wax Highway Cure with Penetrating Silane

Unique, patented technology makes this the industry's only white pigmented highway cure with penetrating silane that provides long-lasting protection from deicing chemicals and freeze/thaw damage. All in one step!

Cures New Concrete

Appearance: White

Seals Concrete with Long-Lasting Penetrating Silane

SPECIFICATIONS: ASTM C309, Type 2, Class A; ASTM C672, NCHRP 244 Series II & Series IV

Great for Outdoor Use



Safe-Cure® Clear^{DR}

Dissipating Resin

A water-based resin curing compound that rapidly decomposes when exposed to UV sunlight and abrasion (often referred to as a "dissipating resin") in anticipation of applying polymer coatings (such as epoxies or urethanes), paints, sealers, thin set mortars, waterproofers or floor covering adhesives. Frequently used in the precast industry and available with red fugitive dye.

Cures New Concrete

Appearance: No Gloss

Does Not Seal Concrete

Solids: 25%

Low-VOC Formula

SPECIFICATIONS: ASTM C309, Type 1 or 1D, Class A & B

ChemMasters white pigmented cures are highly light reflective, exceptionally stable water-borne emulsions that will not clog sprayers.

For a
Complete List
of DOT-Approved
Products, Visit
www.chemmasters.net

Form Releases

Concrete Form Release Agents

Safe-Slip

Water Emulsion Form Release Agent

Safe-Slip is a dual action emulsified concrete form release agent suitable for use with all types of forming materials. Safe-Slip is available in a ready to use formulation and concentrated version.

Release

General Purpose Form Release Agent

Release is a recycled petroleum-based form release agent. Its dual action formulation is lightly reactive with improved barrier characteristics. Release has a pleasant cherry scent.

Release¹²

Highly Purified Form Release For Decorative Concrete

Release¹² is a clean light straw-colored form release agent for use with decorative and architectural concrete, precast, and form and pour applications. Its dual action formulation is lightly reactive with improved barrier characteristics and a pleasant cherry scent.

Release Gel

High Viscosity Form Release

Release Gel is a water-based surface active ready to use form release agent. Its heavy bodied gel provides maximum release characteristics. Release Gel stays where you put it.





Tips For Using Low-VOC Solvent-Based Sealers

- Low-VOC solvents evaporate very rapidly. Avoid sealing during the heat of the day, when evaporation rates will be highest. During the summer months you'll get the best results when applying sealer during the cooler hours of early morning or later evening.
- Properly prepare your concrete prior to sealing. Use high pressure water to clean. Avoid using chemicals that may impede sealer penetration and adhesion.
- Closely adhere to the recommended application rates. Do not over apply as this may cause whitening or "blushing."
- If whitening and blushing occur, or if bubbles form in the coating from solvent evaporation or "out gassing" of the concrete, apply xylene and allow to soften the coating. Then gently backroll.
- Uneven application can result in light and dark areas.
- Applying any sealer will highlight the imperfections in concrete. Existing stains, marks, and other variations will become more noticeable when sealed.
- Always consult the appropriate ChemMasters Product Data Sheet and Safety Data Sheet prior to using any ChemMasters product. You can find them all at www.chemmasters.net.

For Sprayer Application:

- Use a sprayer designed for low-VOC solvents, like Chapin's Industrial Stainless Steel or Xtreme series.
- Use the 1 gallon per minute fan pattern sprayer tip & keep your sprayer tip close to the working surface.
- Dribbling sealer on concrete will appear unsightly when dry. Maintain consistent sprayer pressure!
- Spray evenly, avoiding heavy application along overlaps. Using a roller cover with a solvent resistant core, wet your roller with xylene and backroll to even out heavy and light areas.

For Roller Application:

- Always use a roller cover with a solvent resistant core.
- Apply your sealer from a metal roller pan. Do not dip directly from the pail, or pour from the pail onto concrete as this will result in splashes and spills that create a blotchy finish.
- Keep a second roller pan filled with xylene to clean your roller if it should become stringy or begin to "cobweb" with drying sealer.
- Roll evenly, avoiding heavy application along overlaps.

For Superior Low-VOC Bubble Resistance:



Polyseal™ EZ
See page 3



Stamped & Decorative Concrete Sealer 400-A
See page 5

*Hate
Hot Weather
Bubbles? Try New
PolySeal™ EZ for
Great Performance
in Tough Conditions*

Choose the Right Sealer for Your Application

ChemMasters Product	VOC Content	Carrier	Cures Concrete	Darkening Effect	Recommended Concrete Finish*	Gloss	Penetrating Sealer	Chemical Resistant	UV Stability	% Solids	Application Rate Per Gallon
Aquanil™ Plus 40	<600 g/L	Solvent	No	No	B, S	No Gloss	Yes	Fair	Excellent	40%	100-250 ft²
Aquanil™ Plus 40 CI	<600 g/L	Solvent	No	No	B, S	No Gloss	Yes	Fair	Excellent	40%	100-250 ft²
Aquanil™ Plus 40-A	<250 g/L	Solvent	No	No	B, S	No Gloss	Yes	Fair	Excellent	40%	100-250 ft²
Aquanil™ Plus 40-A CI	<250 g/L	Solvent	No	No	B, S	No Gloss	Yes	Fair	Excellent	40%	100-250 ft²
Aquanil™ Plus 100	<250 g/L	Solvent	No	No	B, S	No Gloss	Yes	Fair	Excellent	100%	200-350 ft²
Aquanil™ Plus 100 CI	<250 g/L	Solvent	No	No	B, S	No Gloss	Yes	Fair	Excellent	100%	200-350 ft²
ChemGuard™	<150 g/L	Water	No	Slight	P	High	Hybrid	Good	Excellent	N/A	1000-3000 ft²
Crystal Clear	<700 g/L	Solvent	Yes	Yes	D	Super High Gloss	No	Fair	Excellent	27%	200-400 ft²
Crystal Clear A	<350 g/L	Solvent	Yes	Yes	D	Super High Gloss	No	Fair	Excellent	25%	300-450 ft²
DuraShield SRT™	<25 g/L	Water	No	Slight	B, S, D	Super High Gloss	No	Excellent	Excellent	25%	300-350 ft²
Gloss Restorer™ XL	<350 g/L	Water	No	Yes	D	High Gloss	No	Fair	Excellent	N/A	300-400 ft²
MMA Wet Look Sealer	<700 g/L	Solvent	No	Yes	B, S, D	Super High Gloss	No	Good	Excellent	25%	300-600 ft²
MMA Wet Look Sealer A	<400 g/L	Solvent	No	Yes	B, S, D	Super High Gloss	No	Good	Excellent	25%	300-600 ft²
Polyseal™	<700 g/L	Solvent	Yes	Yes	B, S, D	High Gloss	No	Fair	Excellent	25%	300-600 ft²
Polyseal™ A	<350 g/L	Solvent	Yes	Yes	B, S, D	High Gloss	No	Fair	Excellent	25%	300-600 ft²
Polyseal™ EZ	<350 g/L	Solvent	Yes	Yes	B, S, D	Medium Gloss	No	Fair	Excellent	22%	300-600 ft²
Polyseal™ EZ Shield	<350 g/L	Solvent	Yes	Yes	B, S, D	High Gloss	Yes	Fair	Excellent	25%	300-600 ft²
Polyseal™ Plus	<700 g/L	Solvent	Yes	Yes	B, S, D	High Gloss	No	Fair	Excellent	30%	300-600 ft²
Polyseal™ Plus A	<350 g/L	Solvent	Yes	Yes	B, S, D	High Gloss	No	Fair	Excellent	30%	300-600 ft²
Polyseal™ WB	<100 g/L	Water	Yes	Slight	B, S	Medium Gloss	No	Good	Excellent	25%	300-600 ft²
Safe Cure® & Seal 309	<100 g/L	Water	Yes	Slight	B, S	Low Gloss	No	Good	Moderate	15%	200-600 ft²
Spray-Cure & Seal 25	<700 g/L	Solvent	Yes	Yes	B, S	Medium Gloss	No	Fair	Good	25%	200-400 ft²
Spray-Cure & Seal 25-A	<350 g/L	Solvent	Yes	Yes	B, S	Medium Gloss	No	Fair	Good	25%	300-400 ft²
Safe Seal™	<150 g/L	Water	Yes	Slight	B, S	Low Gloss	No	Fair	Moderate	16%	200-400 ft²
Silencure™	<700 g/L	Solvent	Yes	Slight	B	Low Gloss	Yes	Fair	Excellent	40%	200-400 ft²
Silencure™ A	<350 g/L	Solvent	Yes	Slight	B	Low Gloss	Yes	Fair	Excellent	40%	200-400 ft²
Silencure™ SRT	<125 g/L	Water	Yes	Slight	B, S	Low Gloss	Yes	Fair	Excellent	28%	200-400 ft²
Stamped & Decorative Concrete Sealer 400-A	<400 g/L	Solvent	No	Yes	D	Very High Gloss	No	Good	Excellent	20%	300-400 ft²
Spall Guard™ WB 10%	<200 g/L	Water	No	No	B, S	No Gloss	Yes	Fair	Excellent	10%	125-150 ft²
Traz™ 25	<700 g/L	Solvent	No	Yes	B, S, D	Super High Gloss	No	Good	Excellent	25%	300-600 ft²
Traz™ 25-A	<400 g/L	Solvent	No	Yes	B, S, D	Super High Gloss	No	Good	Excellent	25%	300-600 ft²

* B = Broom Finished S = Smooth Troweled D = Decorative P = Polished Concrete

Silencure, Polyseal, Traz, Aquanil, Spall Guard, Chemisil, EZ Strip Cure, SafeSeal, Spray Film, DuraShield SRT, Slip Stop, Sure-Lock, Gloss Restorer and Exposee are trademarks of ChemMasters, Inc. ChemMasters and Safe-Cure are registered trademarks of ChemMasters, Inc.



ChemMasters, Inc.
 300 Edwards Street, Madison, OH 44057
 Phone: 440-428-2105
 Toll-Free: 800-486-7866
 Fax: 440-428-7091
www.chemmasters.net
info@chemmasters.net

