



# Concrete Restoration and Grouts





## CHEMMASTERS CONCRETE RESTORATION AND GROUTS

ChemMasters has developed a broad line of chemistries for our state-of-the-art repair mortars, self-levelers and grouts. Each has been meticulously crafted and manufactured to exceed industry standards for durability and performance.

Our extensive product line meets most architectural and engineering specifications, allowing specifiers and contractors the ability to choose materials best suited for their specific application. Available chemistries include:

**Cementitious** - Portland cement-based products with a wide variety of performance characteristics. Cementitious products are valued for their user friendliness, compatibility with existing concrete substrates, and cost efficiency.

- Compressive strengths from 3,500 to 10,000 psi
- Set times from minutes to hours
- Minimum temperature requirements of 20° and above
- Available as grouts, self-levelers repair mortars for horizontal, vertical and overhead applications, including multi-functional products

**Epoxy** - Epoxy based products offer enhanced substrate adhesion with exceptional compressive, chemical, impact and abrasion resistance properties.

- Compressive strengths to 14,000 psi
- High early strengths and rapid cure
- Exceptionally freeze/thaw durable and highly resistant to impact and dynamic loads
- Resistant to a wide variety of acids, solvents and other chemical exposures
- Available as grouts and horizontal repair mortars

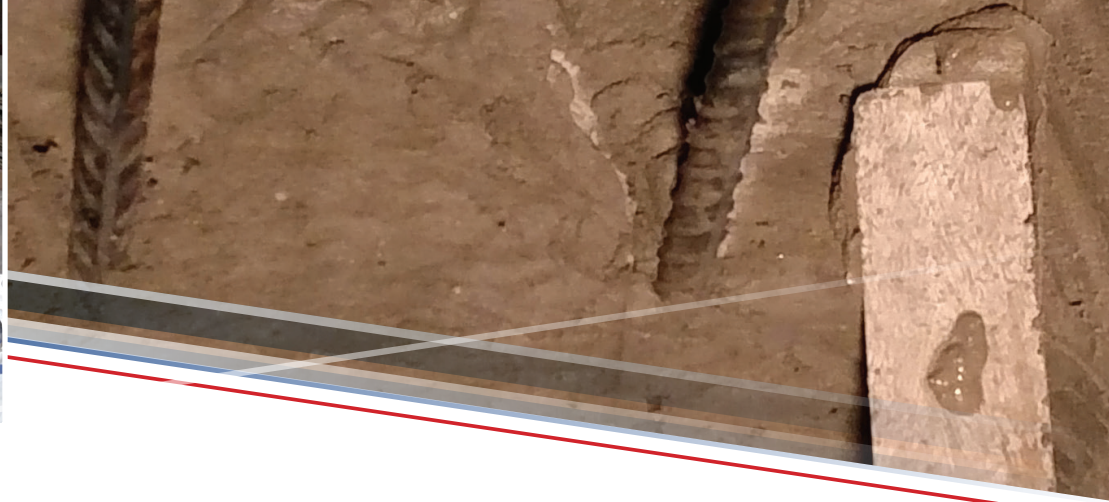
**Methyl Methacrylate (MMA)** - Methyl Methacrylate chemistries will cure quickly in temperatures to -10°F (-23°C) for quick turnaround and unmatched cold weather repairs and installations, while offering high compressive strengths, chemical resistance.

- Compressive strengths to 9,500 psi
- High early strengths and very rapid cure
- Cures in temperatures to -10°F (-23°C)
- Exceptionally freeze/thaw durable and highly resistant to impact and dynamic loads
- Resistant to a wide variety of acids, solvents and other chemical exposures
- Available as grouts and horizontal repair mortars



Select from the following ChemMasters concrete restoration products, grouts and self-levelers, or call our Technical Service Department at **1-800-486-7866** to discuss your application.





## | Horizontal Repairs

### **Durapatch™ MMA**

Very high strength, chemical resistant methyl methacrylate patching mortar. Cures in low temperatures.

### **ChemSpeed™ 65**

Rapid setting, high strength, polymer modified highway or industrial horizontal patching material. Can be extended with up to 50% pea gravel for deep patching. *Specifications: ASTM C928, R3*

### **ChemSpeed™ 75**

One component, rapid setting, high performance mortar with high early strength for structural repair and form & pour applications.

### **ChemPatch™ RS**

One component, rapid setting multi-functional repair mortar for a wide variety of horizontal, vertical and overhead repairs.

### **SpeedPatch™**

Fast setting, gypsum free patching compound. Shavable after initial set. Color similar to standard concrete.

### **SpeedPatch™ 2.0**

Fast setting, gypsum free patching compound with superior freeze/thaw durability. Shavable after initial set. Color similar to standard concrete.

### **FeatherPatch™**

One component, fast setting, high strength, polymer modified patching material for horizontal repairs up to 1 inch depth.

### **ChemMasters Thin Patch**

One component, polymer modified, multipurpose repair mortar designed for thin repairs to horizontal, vertical and overhead concrete. Color similar to standard concrete.

### **ChemMix™**

Concrete mix and patching product designed to provide all the performance, workability and cosmetics of ready mix concrete

## | Form & Pour/Pump

### **ChemPatch™ Form & Pour**

One component, shrinkage compensated, cementitious fiber reinforced and added corrosion inhibitor (CI) for added protection of rebar and structural steel. Excellent flow and pumping characteristics, suitable for large scale form and pour/pump applications.

## | Vertical & Overhead Repairs

### **ChemPatch™ V01**

One component, polymer modified, high strength, fast setting, non-shrink repair mortar with fiber and corrosion inhibitor for deep vertical and overhead structural repairs.

### **SpeedPatch™**

Fast setting, gypsum free patching compound. Shavable after initial set. Color similar to standard concrete.

### **SpeedPatch™ 2.0**

Fast setting, gypsum free patching compound with superior freeze/thaw durability. Shavable after initial set. Color similar to standard concrete.

## | Hydraulic Cement/Plug

### **ChemPlug™ Fast**

Fast setting expansive hydraulic cement compounded to withstand continual exposure to water and pressure.

### **ChemPlug™**

Standard setting expansive hydraulic cement compounded to withstand continual exposure to water and pressure.

## | Rubbing & Resurfacing

### **ChemRub™**

Rubbing and resurfacing compound for vertical and overhead concrete. Color similar to standard concrete.

## | Bonding Agents

### **Cretelox™**

Acrylic integral bonding additive and performance enhancing modifier for thin concrete and dampproof coatings.

*Specifications: ASTM C1059, Type II; ASTM C1438, Type II*

### **Polyweld™ Bonding Agent & Primer**

Bonding agent for concrete, plaster and Level-Top self levelers. Rewettable one time. *Specifications: ASTM C1059, Type I*

### **Polyweld™ EPX<sup>CI</sup>**

Cementitious/epoxy bonding agent with migrating corrosion inhibitor for reinforcing steel.

## | Self-Levelers

### Level Top™

Self leveling, pumpable, gypsum free underlayment.

### Level Top™ Supreme

Self leveling, pumpable, gypsum free overlayment. Polishable.

### Level Top™ Supreme White

Self leveling, pumpable, gypsum free white overlayment. Light reflective. Can be polished, dyed and pigmented to create decorative appearances.

### Polyweld™ Primer

Primer for Level Top™ and Level Top™ Supreme self levelers.

## | Cementitious Construction Grouts

### Conset™ Grout-XT

Non-shrink, high performance construction grade grout with superior flow characteristics at installation temperature X-tremes. *Specifications: ASTM C1107; CRD C 621 92*

### Conset™ Grout NY

Non-shrink construction grade grout for NY State DOT projects. *Specifications: ASTM C1107; CRD C 621 92*

### Conset™ Grout

Non-shrink construction grade grout. *Specifications: ASTM C1107; CRD C 621 92*

## | Specialty Grouts

### Met-Ox™ Grout

Non-shrink, non-catalyzed metallic precision grout. *Specifications: ASTM C1107; CRD C 621 92*

### Kemset™ Grout

Non-shrink, non-metallic high strength precision grout. *Specifications: ASTM C1107; CRD C 621 92*

### Gorilla Grout™

Non-shrink, non-metallic, very high strength precision grout. *Specifications: ASTM C1107; CRD C 621 92*

### Polytops™ MMA Grout

Extremely high strength methyl methacrylate grout cures at temperatures below freezing.

### Polytops™ GC Grout

High strength, general construction grade, three component epoxy grout.

Our Knowledge is  
**Concrete & Specialty  
Coatings<sup>SM</sup>**



We manufacture a complete line of specialty products to improve, repair, protect and beautify concrete and masonry. Contractors rely on our experience, knowledge & quality to help ensure success.



Phone: 440-428-2105  
Toll-Free: 800-486-7866  
Fax: 440-428-7091

300 Edwards St., Madison, OH 44057  
[www.chemmasters.net](http://www.chemmasters.net)  
[info@chemmasters.net](mailto:info@chemmasters.net)